

FAMA WORKBOAT 2510 SERIES

CLASSIFICATION
SOCIETY



SHIPYARD CERTIFICATES &
MEMBERSHIPS



★ DUTY / FUNCTION ★

- ★ Anchor handling
- ★ Towing,
- ★ Barge support
- ★ Cargo transport
- ★ Survey platform
- ★ Dive support

DELIVERY TERMS

- ★ 6-9 months delivery upon contract subject to Engine readiness

★ OPTIONAL

- ★ Engine variations :
Volvo / CAT / Mitsubishi / Iveco / Doosan

- ★ Generator variations:
Sole / CAT / Cummins Onan

- ★ Reduction Gear variations :
ZF / Twindisc

- ★ Deck Crane variations:
Heila / Noreq / Palfinger


SHIPYARD FAMAGUSTA
CYPRUS

LIMAN IĞI, GAZI MAGOSA
TERSANESİ, P.K. 6 GAZI MAGOSA,
KIBRIS - VIA MERSİN 10 TURKEY

TEL: + 90 392 366 2611

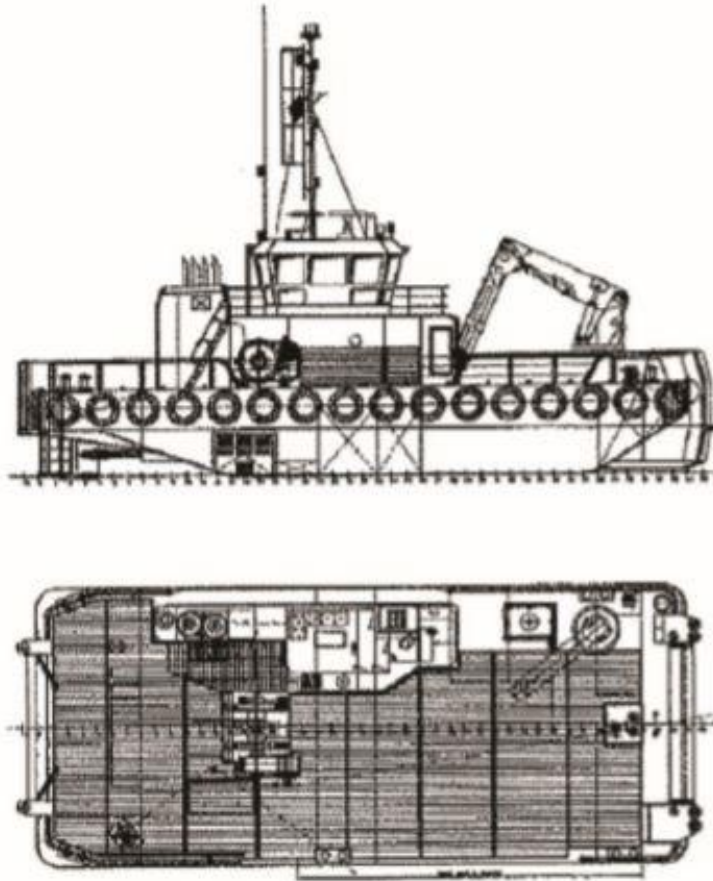
FAX: + 90 392 366 4127

[WEB:WWW.SHIPYARDCYPRUS.COM](http://WWW.SHIPYARDCYPRUS.COM)

[E-MAIL:REPAIR@SHIPYARDCYPRUS.COM](mailto:REPAIR@SHIPYARDCYPRUS.COM)

**BV CLASS
WORKBOAT**

FAMA WORKBOAT 2510 SERIES



GENERAL PLAN

SPECIFICATIONS

Build Date 2010

LOA 25 metres

Beam 9.9 metres

Draft 2.8m aft (2.5m Min)

Deck Space/Area 100 sq metres.
Forward deck wooden sheathed

Deck Load 80 tonnes. Full stability book

Class MCA Cat 1 150nm 24hr working
Bureau Veritas 1 + Hull Mach Unrestricted Navigation

Propulsion 2 Type CAT C32 engines, power 1,350BHP each Cooling
Keel cooled

Speed 10 knots max. 8kts cruising

Bollard pull 30 tonnes

Generator(s) 2 Cummins 6CTA8.3-D(M) Output 190Kw
Deck Equipment

Crane Heila HLRM 200 – 4SL Remote operated 9000kg @ 16.3
metres – 22000kg @ 7.75 Fitted with 10tonnes boom mounted
winch

Winches 1 – 80 tonne deck winch 650m
38mm towing wire
1 – 50 tonne deck winch
1 – 15 tonne tugger winch
All winches controlled from wheelhouse

Store/Workshop Area Yes

Fuel Capacity 90 tonnes / transferrable & metered

Water Capacity 37 tonnes / transferrable

Navigation Equipment

Magnetic compass, Satellite compass, Autopilot Radar, (D)GPS, 2 x
Electronic chart plotter, Echo sounder, Doppler speed log, Watch
keeper alarm, AIS, Navtex

Comms Equipment

2 – DSC VHF radios, 2 handheld VHF radios, 2 x GMDSS radios, Cell
(GSM), Deck hailer, Satellite phone, MF/HF radio, Email (satellite &
GSM), Intercom

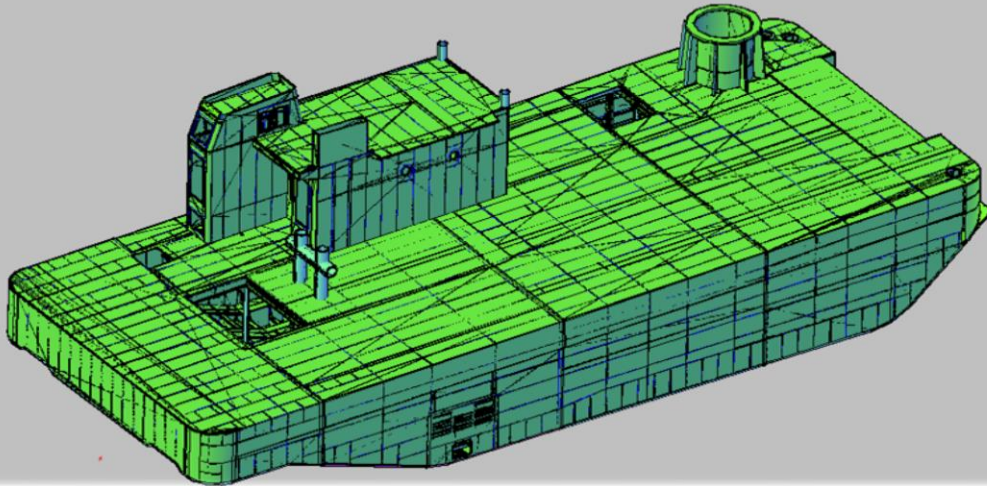
Other Equipment

Bow roller 100te SWL Double push bow Mampaey quick release
towing hook/Bitts Forward hydraulic fork Forward hydraulic pins
Deck flood Lights Search light

Accommodation

5 cabins. 3 single. 2 double Messing facilities All accommodation
heated & air conditioned Full LSA for 15 persons (inc crew) @
60nm (Cat 2)

FAMA WORKBOAT 2510 SERIES



Crane Lifting Capacity (fwd)

