

# FAMA TUG 1506 SERIES

## CLASSIFICATION SOCIETY



## SHIPYARD CERTIFICATES



### Shipyard Famagusta

LIMAN IÇI, GAZI MAGOSA  
TERSANESI, P.K. 6 GAZIMAGOSA,  
KIBRIS

TEL: + 90 392 366 2611

FAX: + 90 392 366 4127

WEB: [WWW.SHIPYARDCYPRUS.COM](http://WWW.SHIPYARDCYPRUS.COM)

E-MAIL: [REPAIR@SHIPYARDCYPRUS.COM](mailto:REPAIR@SHIPYARDCYPRUS.COM)

## ★ DUTY / FUNCTION

- ★ Ship assist
- ★ Line handling
- ★ Terminal handling
- ★ Barge tugging
- ★ Support boat
- ★ Supply boat
- ★ Crew boat
- ★ Life saving boat

## ★ DELIVERY TERMS

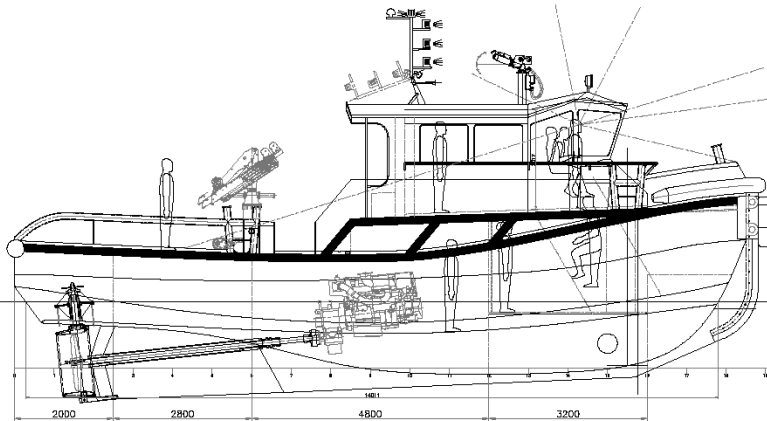
- ★ Ready in Stock 1 pc.
- ★ 3 months delivery upon contract 1 pc.
- ★ 6 months delivery upon contract subject to Engine readiness

## ★ OPTIONAL

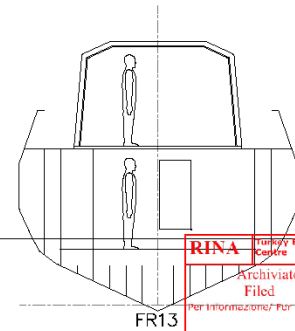
- ★ Engine variations : Volvo / CAT / Mitsubishi / Iveco / Doosan
- ★ Generator variations: Sole / CAT / Cummins Onan
- ★ Reduction Gear variations : ZF / Twindisc
- ★ Fi-fi pump upto 300m³/h & Foam injected fire pump
- ★ Deck Crane options : Noreq / Palfinger



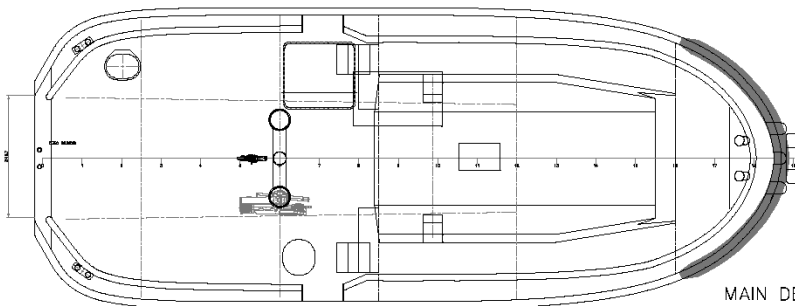
# FAMA TUG 1506 SERIES



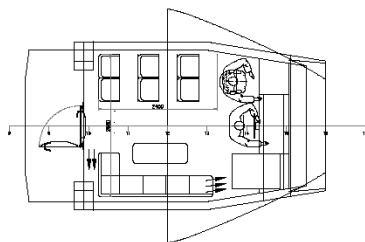
PROFIL VIEW



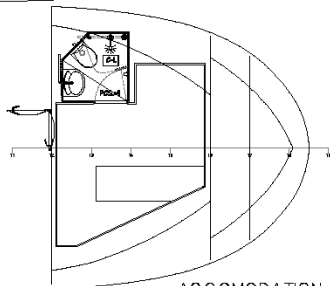
FR13



MAIN DECK



WHELLHOUSE




ACCOMODATION DECK

| MAIN DIMENSIONS              |          |
|------------------------------|----------|
| LENGTH OVERALL               | 14.800 m |
| LENGTH EXTEND                | 15.225 m |
| LENGTH OP WACHBLIND          | 14.322 m |
| LENGTH BETWEEN PERPENDICULAR | 14.000 m |
| MOULDED BREADTH              | 5.800 m  |
| BREADTH EXTEND               | 6.080 m  |
| DEPTH                        | 2.400 m  |
| DESIGN DRAFT                 | 1.600 m  |

|  |                       |
|--|-----------------------|
| ENGINE 2 x 552kW @ 1900RPM DI6MH+ MGX170DC |                       |
| PROPELLER 2 x K4.70 + 19A                  |                       |
| CLASS : RINA CHULLI, MACH, TUG,            |                       |
| COASTAL SERVICE                            |                       |
| HP   | ABOUT 16.0 t          |
| SPEED                                      | ABOUT 11.0 kn         |
| Fire Fighting                              | 300 m <sup>3</sup> /h |

| TANK CAPACITIES |                           |
|-----------------|---------------------------|
| DIESEL OIL      | : abt 16.0 m <sup>3</sup> |
| FRESH WATER     | : abt 2.5 m <sup>3</sup>  |
| SEWAGE          | : abt 1.1 m <sup>3</sup>  |
| BILGE           | : abt 1.1 m <sup>3</sup>  |

| NO  | DEGIŞIKLIK  | TARİH          | İMZA       |
|---|-------------|----------------|------------|
|  <b>BOSPHORUS</b><br><b>GENİŞ VE YATÇILIK MAK. LTD. ŞTİ.</b> |             |                |            |
| MUSTERİ/OWNER   |             | İSİM/ŞİRKET    | TARİH/İMZA |
| FAMAGUSTA LTD.  |             | 13.05.2012     | 17.05.2012 |
| PROJE NO  | ÖLÇEK/SCALE | EBAT/SIZE      | TARİH/İMZA |
| 188   | 1/50        | 547x480        | 17.05.2012 |
| İSİM/TİTLE  |             | İSİM/ŞİRKET    | TARİH/İMZA |
| 18mt Tug BOAT   |             | FAMAGUSTA LTD. | 17.05.2012 |
| GENERAL ARRANGEMENT PLAN  |             | İSİM/ŞİRKET    | TARİH/İMZA |
|   |             | 17.05.2012     |            |

## PRINCIPAL CHARACTERISTICS

Length (Loa) : 14.80 m.  
 Beam (B) : 6.08 m.  
 Draft (T) : 1.60 m.  
 Depth(D) : 2.40 m.  
 Fuel Capacity (approx.) : 16 mt.  
 Fresh Water Capacity : 3 mt.  
 Max. Speed (approx.) : 11 knot.  
 Class : RINA  
 Notation: C+ HULL, MACH, TUG , COASTAL SERVICE

## TOTAL BHP

2 X 750 BHP = 1500BHP

## BOLLARD PULL

16-18 Tons.

## MAIN ENGINES

2x Volvo Penta D16 MH engines, 551 kW at 1900 RPM Twindisc Reduction/Reverse Gearboxes MGX5170

## GENERATOR SET

2 x Generator sets Mitsubishi 50GT (49kVA) and 25 GT(20kVA)

## MANOEUVERING

2 x Heavy Duty NiAlBr High Skrew Propellers (RINA CLASS)  
 2 x K110 fixed propeller thrust augmenting kort nozzles (RINA CLASS)  
 4 x independent steering gears, synchronized full follow up(Electrohydraulic steering system rudders 4 pc. With 2\*35° angle

## BASIC DUTY

Ship assist, Terminal Line handling, Barge tugging, Support

## TOWING EQUIPMENT

120 m x 24 mm dia. Steel towing wire (optional): manuel tow pins, 1 x Manpaey disc type towing hook SWL 15 tons located at aft  
 H-built: 1 x H – Towing Built AFT: 1 XH + Towing staple forward

## WINCH

Anchor winch

## NAVIGATION AND COMMUNICATION EQUIPMENT

2 x VHF DCS Radio, Navtex receiver, GPS Compass , ECDIS, Magnetic compass, Intercom

## OTHER EQUIPMENT

Key type and Hollow D type fenders;  
 Halogen searchlight;  
 fire detection and alarm system;  
 Air conditioning;  
 1 x 100 kg. anchor and 110 m 14 mm UZ chain(BV approved).

## FIRE PUMP

1 X 25 m<sup>3</sup>/h. With fire monitor on compass deck

## CABINS

Crew: 2, passenger 2 , 2 bed cabin accommodation for 2 with toilet and shower facility. Messroom with galley

# FAMA TUG 1506 SERIES

